

Local Green Space 8f	Description	Test against LGS criteria in the NPPF
Fields between 8e and Stubbins Lane	Agricultural land rising up towards Brackenhurst with views back over the town. Fields surrounded by hedgerows with several footpaths on their boundaries.	The land lies within the cone of protected views of Southwell Minster although it lies outside the extended conservation area. The paths are well used by local walkers. The hedgerows and the dumble on the northern edge are a haven for wildlife. The dumble, an example of this feature, peculiar to Nottinghamshire, is home to protected wildlife species. The bridleway from Nottingham Road through the dumble wood with associated stream, is a much used, quiet route for riders and walkers, to wider, more open country and the Robin Hood Way.

Summary

Close Proximity	Special to Community	Beautiful	Historic Significance	Recreational Value	Tranquil	Rich Wildlife	Local in Character	Extensive?	In Conservation area	Contributes to Landscape Setting of Southwell
yes	yes	no	yes	yes	yes	yes	no	yes	no	yes



Looking South East towards The Minster

Local Green Space 9a	Description	Test against LGS criteria in the NPPF
The central open space in the Hopewell Rise Estate	The area contains a deep balancing pond surrounded by metal post and rail fencing	The area provides a focal point to the development giving a sense of place as required in the Neighbourhood plan. It also contributes to the open space required in the District Council's Core strategy documents.

Summary

Close Proximity	Special to Community	Beautiful	Historic Significance	Recreational Value	Tranquil	Rich Wildlife	Local in Charader	Extensive?	In Conservation area	Contributes to Landscape Setting of Southwell
yes	yes	no	no	no	no	no	yes	no	no	no



Looking west across the space

Local Green Space 9b	Description	Test against LGS criteria in the NPPF
The Hopewell Rise Estate play area	Situated in the south east corner of the estate and next to the High Town Footpath. Contained play equipment provided by the developer.	The Land provides a children's play area as required in the Neighbourhood plan

Summary

Close Proximity	Special to Community	Beautiful	Historic Significance	Recreational Value	Tranquil	Rich Wildlife	Local in Character	Extensive?	In Conservation area	Contributes to Landscape Setting of Southwell
yes	yes	no	no	yes	no	no	yes	no	no	no



Looking South East towards High Town path

Local Green Space 10	Description	Test against LGS criteria in the NPPF
Higgons Mead, off Church Street and the site of the former Minster Grammar School	The area is contiguous with Minster Fields and is separated from Church Street by a timber post and rail fence.	Minster Fields, the former school playing fields is already designated as a main open area. The Higgons Mead was gifted to the church on condition that it was not to be built on and has been removed from the District Council's allocated sites. It forms the northern end of the historic Archbishop's Deer Park which stretched from Church Street up to Brackenhurst.

Summary

Close Proximity	Special to Community	Beautiful	Historic Significance	Recreational Value	Tranquil	Rich Wildlife	Local in Character	Extensive?	In Conservation area	Contributes to Landscape Setting of Southwell
yes	yes	no	yes	yes	no	no	yes	no	yes	yes



Looking west from Church Street (in the foreground). The grounds of the Archbishop's Palace and Vicar's Court are surrounded by the trees in the background.

Local Green Space 11	Description	Test against LGS criteria in the NPPF
On the north side of Newark Road immediately to the west of Potwell Dyke	A small piece of scrubby land adjoining a footpath from Newark Road to Greet Park Close	The land is part of the walk from the town centre to the Workhouse, the latter now owned by the National Trust. It was recognised as an important part of the walk when an application for a bungalow on the site was refused by the District Council (Planning ref 10/00324).

Summary

Close Proximity	Special to Community	Beautiful	Historic Significance	Recreational Value	Tranquil	Rich Wildlife	Local in Character	Extensive?	In Conservation area	Contributes to Landscape Setting of Southwell
yes	yes	no	no	yes	no	no	yes	no	no	no



Looking north across Newark Road from the end of Burgage Lane. The footpath is on the right and continues through Greet Park Close beyond and onwards to Upton Road and the Workhouse

Local Green Space 13 (12 is deleted)	Description	Test against LGS criteria in the NPPF
The central space in front of the bungalows on Norwood Gardens	An open grassed area with trees	The area provides a focal point to the bungalows and surrounding houses and contributes to the area of open space in North Ward. It is indicated as open space in the NSDC Open Space Strategy and Assessment.

Summary

Close Proximity	Special to Community	Beautiful	Historic Significance	Recreational Value	Tranquil	Rich Wildlife	Local in Character	Extensive?	In Conservation area	Contributes to Landscape Setting of Southwell
yes	yes	no	no	yes	no	no	yes	no	no	no



Looking NE

Local Green Space 14	Description	Test against LGS criteria in the NPPF
Beryl's Meadow	A small Triangular piece of land south of Wakeling Close, mostly grass with a footpath running through it. The land is owned by the Town Council.	The land lies within the extended Conservation Area. It gives access from Farthingate Close to a footpath up to Brackenhurst across area 22. It provides a peaceful haven close to the local communities of Wakeling Close and Farthingate.

Summary

Close Proximity	Special to Community	Beautiful	Historic Significance	Recreational Value	Tranquil	Rich Wildlife	Local in Character	Extensive?	In Conservation area	Contributes to Landscape Setting of Southwell
yes	yes	no	no	yes	yes	no	yes	no	yes	yes



Looking SW from the NE corner, the footpath is on the left, the backs of houses on Wakeling Close on the right.

Local Green Space 15	Description	Test against LGS criteria in the NPPF
Land to the east of Kirklington Road	An historic Orchard	The land was excluded from housing site Ho/So/4 in the Local Plan. It is an historic orchard identified in the ***** <i>JM – I think you showed me something a few years ago</i>

Summary

Close Proximity	Special to Community	Beautiful	Historic Significance	Recreational Value	Tranquil	Rich Wildlife	Local in Character	Extensive?	In Conservation area	Contributes to Landscape Setting of Southwell
yes	no	no	yes	no	yes	no	yes	no	no	no



Looking south from the footpath on the north boundary

Looking east from Kirklington Road, part has been fenced off recently.

Local Green Space 18a (16 & 17 deleted)	Description	Test against LGS criteria in the NPPF
Land between Southwell and Normanton	The land rises from the River Greet up toward the hamlet of Normanton. It is partureland, traversed by a footpath across the centre and another running diagonally up to Normanton. There is Lidar evidence of ancient ridge and furrows.	The land is part of the extended conservation area and gives good views to the SW back towards Southwell with the historic Greet Lily Mill prominent on the edge of the town. To the north, Normanton is prominent.

Summary

Close Proximity	Special to Community	Beautiful	Historic Significance	Recreational Value	Tranquil	Rich Wildlife	Local in Character	Extensive?	In Conservation area	Contributes to Landscape Setting of Southwell
yes	yes	no	yes	yes	no	no	yes	no	yes	yes



Looking SW towards Southwell. Greet Lily Mill is prominent on the left



Looking north towards Normanton. NB the diagonal footpath.

Local Green Space 18b	Description	Test against LGS criteria in the NPPF
Normanton Park	The land slopes up from the river Greet towards Normanton Hall. It is pasture land surrounded by mature trees and hedgerows and is planted with specimen trees. There is Lidar evidence of ancient ridge and furrows	The Park historically was part of the land attached to the Grade II listed Normanton Hall. It was separated in ownership in the late 20 th Century and has been included in the extended Conservation area. The land effectively joins the site of the Hall to Southwell

Summary

Close Proximity	Special to Community	Beautiful	Historic Significance	Recreational Value	Tranquil	Rich Wildlife	Local in Character	Extensive?	In Conservation area	Contributes to Landscape Setting of Southwell
yes	yes	no	yes	no	yes	no	yes	no	yes	yes



Looking SW from the top Normanton Road back towards Southwell.

Local Green Space 18c	Description	Test against LGS criteria in the NPPF
Land in the NE corner of Normanton crossroads	The land is surrounded by a tree belt and is walled on the boundary with Normanton Road	The land is thought to be the ancient site of the previous medieval Normanton Hall and has been included in the extended Conservation area

Summary

Close Proximity	Special to Community	Beautiful	Historic Significance	Recreational Value	Tranquil	Rich Wildlife	Local in Character	Extensive?	In Conservation area	Contributes to Landscape Setting of Southwell
To Normanton	yes	yes	yes	no	yes	yes	yes	no	yes	yes



Looking East from Normanton Crossroads

Local Green Space 19a	Description	Test against LGS criteria in the NPPF
Land south and east of Easthorpe Court	Pasture land separated from the gardens of Easthorpe Court by a HaHa. A line of mature trees runs through the centre in a north/south direction and another along the south side of Fiskerton Road. A footpath runs along the southern boundary from Farthingate to Fiskerton Road with a branch off to the south towards Crink Lane.	The land is designated as Important Open Space in the Easthorpe Character Area map and forms the setting for the Grade II listed Easthorpe Court.

Summary

Close Proximity	Special to Community	Beautiful	Historic Significance	Recreational Value	Tranquil	Rich Wildlife	Local in Character	Extensive?	In Conservation area	Contributes to Landscape Setting of Southwell
yes	yes	yes	yes	yes	yes	no	yes	no	yes	yes



Looking east from the SW corner from the footpath from Farthingate. Easthorpe Court on the left.

Local Green Space 19b	Description	Test against LGS criteria in the NPPF
Land south of Potwell Dyke and west of Shady Lane	The land forms part of the gardens of houses and the Hearty Goodfellow pub on the north side of Easthorpe. One garden contained the original Bramley Apple Tree. The gardens contain a number of trees along the banks of the Potwell.	The land is designated as Important Open Space in the Easthorpe Character Area map.

Summary

Close Proximity	Special to Community	Beautiful	Historic Significance	Recreational Value	Tranquil	Rich Wildlife	Local in Character	Extensive?	In Conservation area	Contributes to Landscape Setting of Southwell
yes	yes	no	yes	yes	yes	no	no	yes	yes	yes



Looking west from Shady Lane across the garden of the Hearty Goodfellow pub. Potwell Dyke is on the right..

Local Green Space 19c	Description	Test against LGS criteria in the NPPF
Land to the south of Potwell Dyke and east of Shady Lane	A small tract of land, pasture surrounded by mature trees.	The land is designated as Important Open Space in the Easthorpe Character Area map.

Summary

Close Proximity	Special to Community	Beautiful	Historic Significance	Recreational Value	Tranquil	Rich Wildlife	Local in Character	Extensive?	In Conservation area	Contributes to Landscape Setting of Southwell
yes	yes	yes	yes	yes	yes	no	yes	no	yes	yes

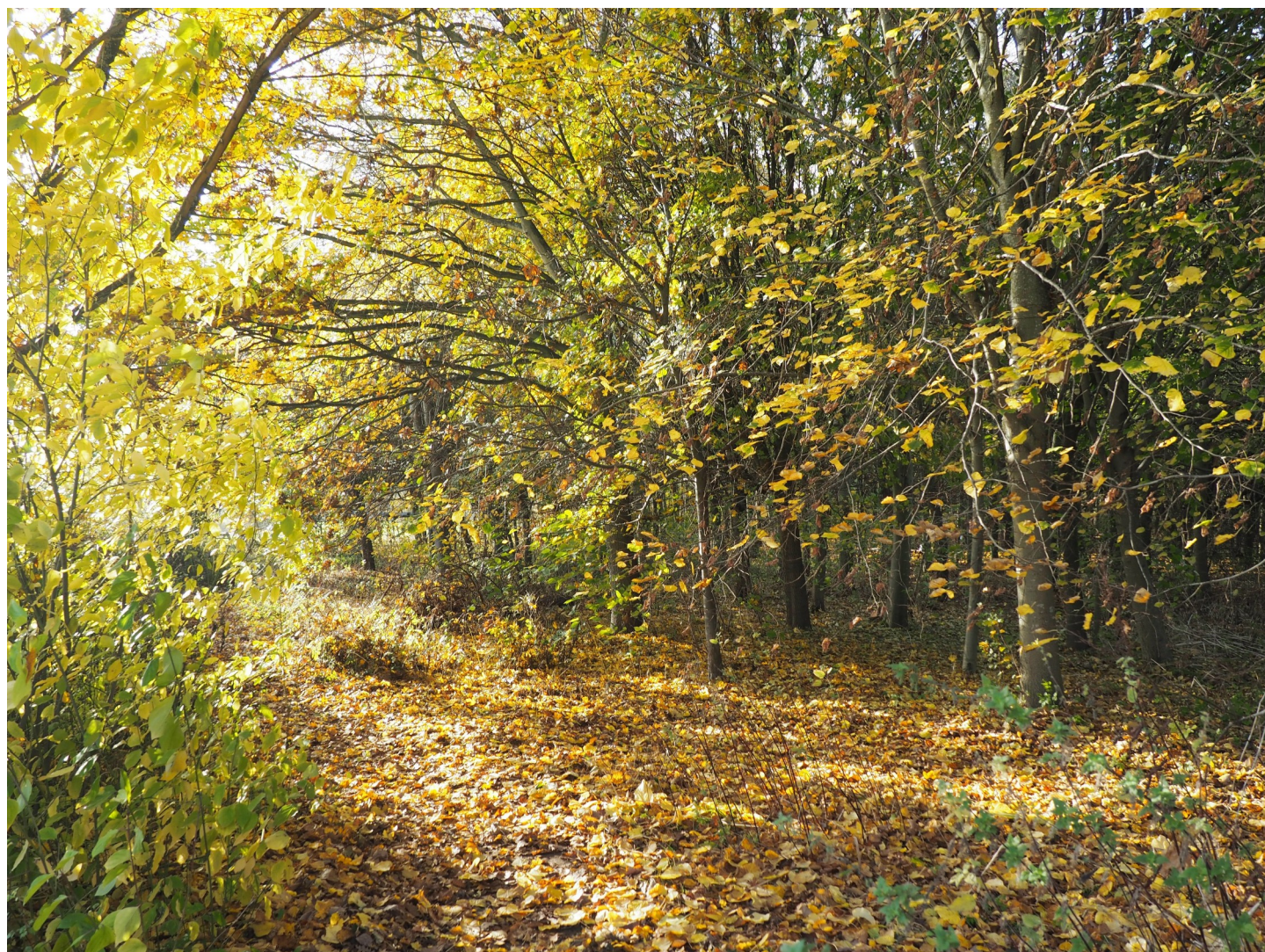


Looking North from the SW corner of the land. The trees in the background line Potwell Dyke.

Local Green Space 20	Description	Test against LGS criteria in the NPPF
Millenium Wood	The wood lies southwest of Brackenhurst Hall and abutts Nottingham Road. It was planted as a joint venture between Nottingham Trent University and Southwell Town Council.	The wood was planted as a community wood and a footpath runs through it on the western boundary.

Summary

Close Proximity	Special to Community	Beautiful	Historic Significance	Recreational Value	Tranquil	Rich Wildlife	Local in Character	Extensive?	In Conservation area	Contributes to Landscape Setting of Southwell
No	yes	yes	no	yes	yes	yes	yes	no	no	no



Looking south from the footpath on the western edge of the wood..

Local Green Space 21	Description	Test against LGS criteria in the NPPF
Land between Nottingham Road and Park Lane	Currently grassland rising from the junction of Park Lane and Nottingham Road up the hill to the Brackenhurst Campus of Nottingham Trent University.	The land forms an important element in the landscape setting of Southwell coming to the town from the south. It allows the iconic views of Southwell Minster when coming over the hill at Brackenhurst and lies within the Zone of protected views of the Minster.

Summary

Close Proximity	Special to Community	Beautiful	Historic Significance	Recreational Value	Tranquil	Rich Wildlife	Local in Character	Extensive?	In Conservation area	Contributes to Landscape Setting of Southwell
yes	yes	yes	yes	yes	no	no	no	yes	yes	yes



Looking north from Nottingham Road near the end of Stubbins Lane



Looking north from Brackenhurst Campus.

Local Green Space 22	Description	Test against LGS criteria in the NPPF
Land between Southwell and Crink Lane	Agricultural land in mixed use rising to the south from the town, crossed by several footpaths. The fields are bordered by trimmed hedgerows..	The land forms an important element in the landscape setting of Southwell from the south. It lies within the zone of protected views of The Minster. Historically it formed much of the Archbishops' Deer Park. It lies within the extended Conservation Area.

Summary

Close Proximity	Special to Community	Beautiful	Historic Significance	Recreational Value	Tranquil	Rich Wildlife	Local in Character	Extensive?	In Conservation area	Contributes to Landscape Setting of Southwell
yes	yes	yes	yes	yes	no	no	no	yes	yes	yes



Looking north from Crink Lane with the Minster on the right and the Minster School just below it.

Local Green Space 21	Description	Test against LGS criteria in the NPPF
Land south of Brackenhurst Hall	Pasture land with several specimen trees and part of the Brackenhurst Campus of Nottingham Trent University. It is traversed by a well used path	The land has been included to preserve the historic setting of the Grade II listed Brackenhurst Hall.

Summary

Close Proximity	Special to Community	Beautiful	Historic Significance	Recreational Value	Tranquil	Rich Wildlife	Local in Character	Extensive?	In Conservation area	Contributes to Landscape Setting of Southwell
yes	yes	yes	yes	yes	yes	no	yes	yes	no	no



Looking west towards Brackenhurst Hall from the eastern boundary