

**Teepee Lantern Making Instructions**

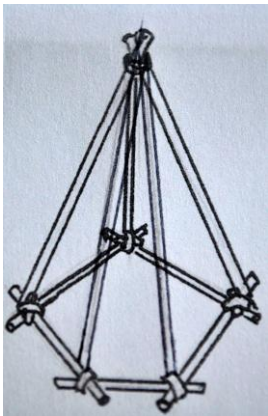
**Materials**

- Bamboo canes 5 x 6ft (1.80m)
- Bamboo canes 5 x 3ft (0.90m)
- Masking Tape
- Clingfilm (a 35cm wide, 50m roll was plenty)
- White Tissue Paper
- Coloured Tissue Paper
- PVA Glue (make sure it's non-washable)
- String

**Equipment**

- Possibly a saw for cutting canes
- Scissors
- Glue pots
- Paint brushes (various sizes, soft bristles)
- Polythene sheets (to protect floor)
- Soft pencil
- Old clothes/protective clothing

**Lantern Construction**



1. Lay the 3ft canes in a pentagon shape on the floor with the cane ends crossing. Tape the joints in both directions over the joint. (tip: tape all joints in one direction first so the joints still have some movement, this allows you to re-adjust the pentagon shape until it's even before taping more securely in both directions)

2. Take the 6ft canes and tie them together around the top with string so that the canes have some movement allowing them to fan out and make a pyramid shape. Arrange the canes so that the bottoms are meeting the points of the pentagon base. Tape them securely to the base. Adjust the canes at the top until you're happy with the whole lantern shape then tape. (Check you can get it out of your door before continuing! The base is slightly wider than an average door but the structure should still be slightly flexible even when covered and if you take it through a door point first it should gently squeeze through)



3. Cover the whole lantern with clingfilm. (Just the upright walls not the base on the floor) I suggest you start by wrapping it around the top and working down, there will be crumples and creases, this is unavoidable but keep the surface as smooth as possible. I also followed the way the clingfilm wanted to go, often taking it straight down, around the base cane and back up again, weaving it through the clingfilm so that it is always on the outside. It doesn't matter if there are some small gaps as long as there is a good skin all over the lantern structure for you to tissue onto.



4. Dilute the PVA 50:50 with water. (The PVA must be the non-washable type to waterproof the lantern when out of doors, so wear protective or old clothes)

5. Starting at the top, cover the lantern in approx 2 layers of white tissue paper, this is your base coat. I recommend you cut or tear the tissue sheets into pieces approx 20-30cm. Paint glue onto the clingfilm, place on a pieces of tissue and gently glue over the top. Repeat, overlapping pieces as you go. When you get to the bottom, finish off by tucking the tissue around the base cane. (NB. Some tissue paper is not as strong as others, don't worry if tears happen while gluing, use a soft brush gently and patch any tears/



6. With string mark two lines around the lantern, one 40cm from the base, one 110cm from the base. Glue smaller pieces of tissue over the string to hold it in place.

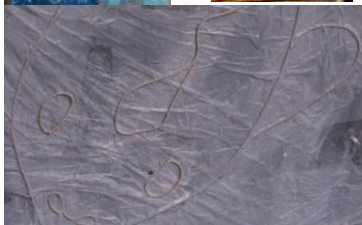
7. Leave the lantern to dry before decorating, preferably over night. (You could use this time to create your designs – see page 2)



The theme is Frost & Flame and the colour combinations we're using are:

Frost: shades of blues, turquoise, greys, white, mauve & silver

Flame: shades of reds, oranges, yellows, maroons & gold



Use these colour combinations to decorate the top and bottom borders of the lantern. Use small pieces of tissue to collage colour or designs, keep this design consistent all around the lantern. You may also want to alter the style of the line that divides the top & bottom sections. There are some design ideas below.



The Centre section of the panel is for your image design. This could be a simple pattern based on the theme frost & flame or an image/images relating to your particular group. You can repeat the same design in each centre section around the lantern or vary it. When considering your designs it may help to think in terms of stain glass windows, using outlined shapes and colour.



1. Draw a design on paper, bold and simple is best, cut this out and use masking tape to hold it in place on the panel. Use a soft pencil to gently draw around the template and then remove the template.
2. Glue string along the pencil lines and secure in place by gluing small pieces of tissue over the top.
3. When the lantern is lit the string will show as silhouetted lines. Use this, if you wish, to create more detail or patterns in your design. Glue and tissue the string as before.
4. Now colour in the design with small pieces of tissue, overlapping each piece, they could be random torn pieces or cut shapes.
5. Colour the background in with contrasting colours to make your designs stand out. (e.g. if your design is using flame colours then use the frost colours for the background)
6. Make sure everything has been coated in PVA to waterproof it.

Finally, if you want to add some sparkle, add touches of glitter to elements of your design.

There are some more design ideas below.

